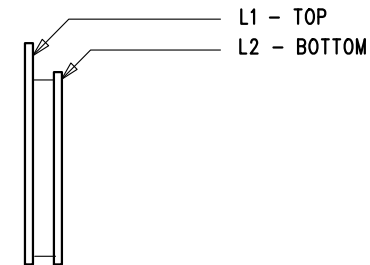


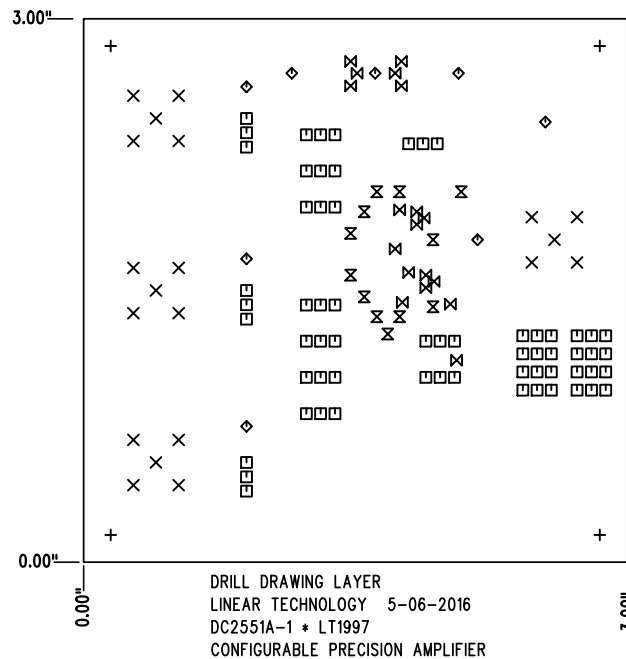
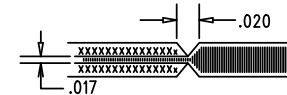
REVISION HISTORY				
ECO	REV	DESCRIPTION	APP. ENG.	DATE
-	1	1ST PROTOTYPE	JON M..	5-06-16

## LAYER STRUCTURE




## NOTES: UNLESS OTHERWISE SPECIFIED

- FAB PER IPC-A-600.
- MATERIAL: -LEAD FREE ASSEMBLY COMPLIANT, ISOLA FR-370HR OR EQUIVALENT.  
-FINISHED THICKNESS TO BE 0.062" +/- .005"  
-TOTAL OF 2 LAYERS WITH 2 OZ. CU ON THE OUTER LAYERS  
-FLAMMABILITY RATING: 94 V-0 MINIMUM.
- SIZE: CUT TO DIMENSIONS AND TOLERANCES SHOWN.  
0.00" ARE PRIMARY DATUMS.
- DRILLING: -DRILL HOLES PER SCHEDULE. PLATE THROUGH HOLES WITH COPPER, 0.001" THICK MIN.  
-ALL HOLE SIZES ARE SPECIFIED AFTER PLATING.  
-HOLE LOCATION TOLERANCES ARE +/-0.003" IN RELATION TO CENTER
- FINISH: -SMOBC USING LPI BOTH SIDES, COLOR GREEN.  
-GOLD IMMERSION BOTH SIDES.  
-FOR SILKSCREENS: USE WHITE NON-CONDUCTIVE INK.
- DO NOT ALTER ARTWORK e.g. TO ADD LOGO OR DATE CODE.  
PAD SIZE CAN BE MODIFIED TO MEET END FINISH.
- PCBS ARE TO BE RoHS COMPLIANT.
- SCORING FOR PANELIZED PCB (PRODUCTION FAB ONLY):



SIZE	QTY	SYM	PLATED	TOL
4.7498	4	+	NO	+/-0.003
1.397	20	X	YES	+/-0.003
0.889	63	□	YES	+/-0.003
1.6764	8	◇	YES	+/-0.003
1.27	12	⊗	YES	+/-0.003
0.254	18	⊗	YES	+/-0.003

UNLESS OTHERWISE SPECIFIED		APPROVALS		 <b>LINEAR TECHNOLOGY</b> 1630 MCCARTHY BLVD MILPITAS, CA 95035 PH: (408)432-1900 www.linear.com LTC CONFIDENTIAL - FOR CUSTOMER USE ONLY	
DIMENSIONS ARE IN INCHES		PCB DES.	AK		
TOLERANCES:		APP ENG.	JON M.	TITLE: FABRICATION DRAWING	
0.XX" = ±0.01"				CONFIGURABLE PRECISION AMPLIFIER	
0.XXX" = ±0.005"					
INTERPRET DIM AND TOL PER ASME Y14.5M-1994				SIZE	IC NO.
THIRD ANGLE PROJECTION				N/A	LT1997-3
					DEMO CIRCUIT 2551A
		SCALE = NONE		REV	1
				FILENAME: DC2551A-1.PCB	SHT 1 OF 1